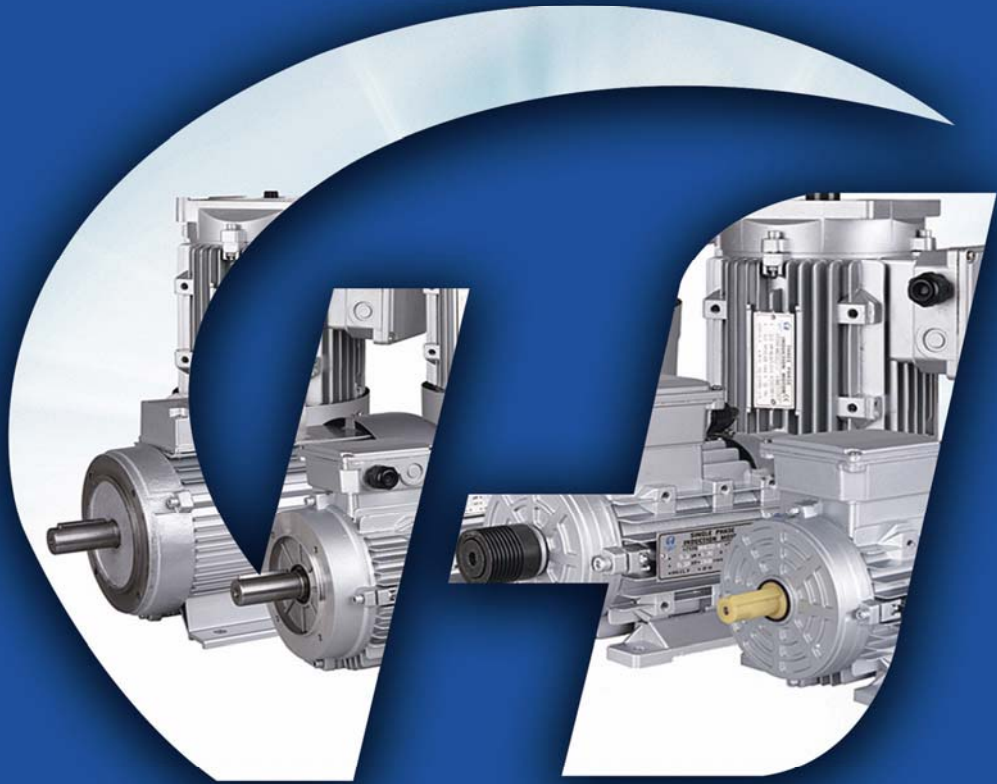


汽保电机及动力单元供应商



上海惠亨机电设备有限公司
SHANGHAI HUIHENG ELECTRICAL EQUIPMENT CO., LTD.

www.huihengmotor.com



企业简介

上海惠亨机电设备有限公司是集科工贸为一体的汽保电机和动力单元专业生产制造企业。本公司主要产品为“惠亨”牌各系列型号交直流电动机和动力单元。公司自成立以来，我们一直致力于制造顶级质量的产品。

电机产品主要配套于：汽保设备（举升机，拆胎机，平衡机）和液压设备。我们的电机均通过CE认证，部分型号符合美国NEMA标准，我们具有对于特殊环境条件和特殊驱动要求的各种派生特种电机的设计、开发能力。

动力单元泵体部分选用意大利原厂进口的中心阀块和液压齿轮泵，液压泵排量0.3-10cc，电机功率为0.5-4.0KW（交流）或0.2-3.0KW（直流），油罐容积为1-25升。产品广泛应用于汽车柱式举升机，剪式举升机，货车尾升降架，堆高机，叉车，升降台，自卸车，登车桥，展翼车和塔吊等。

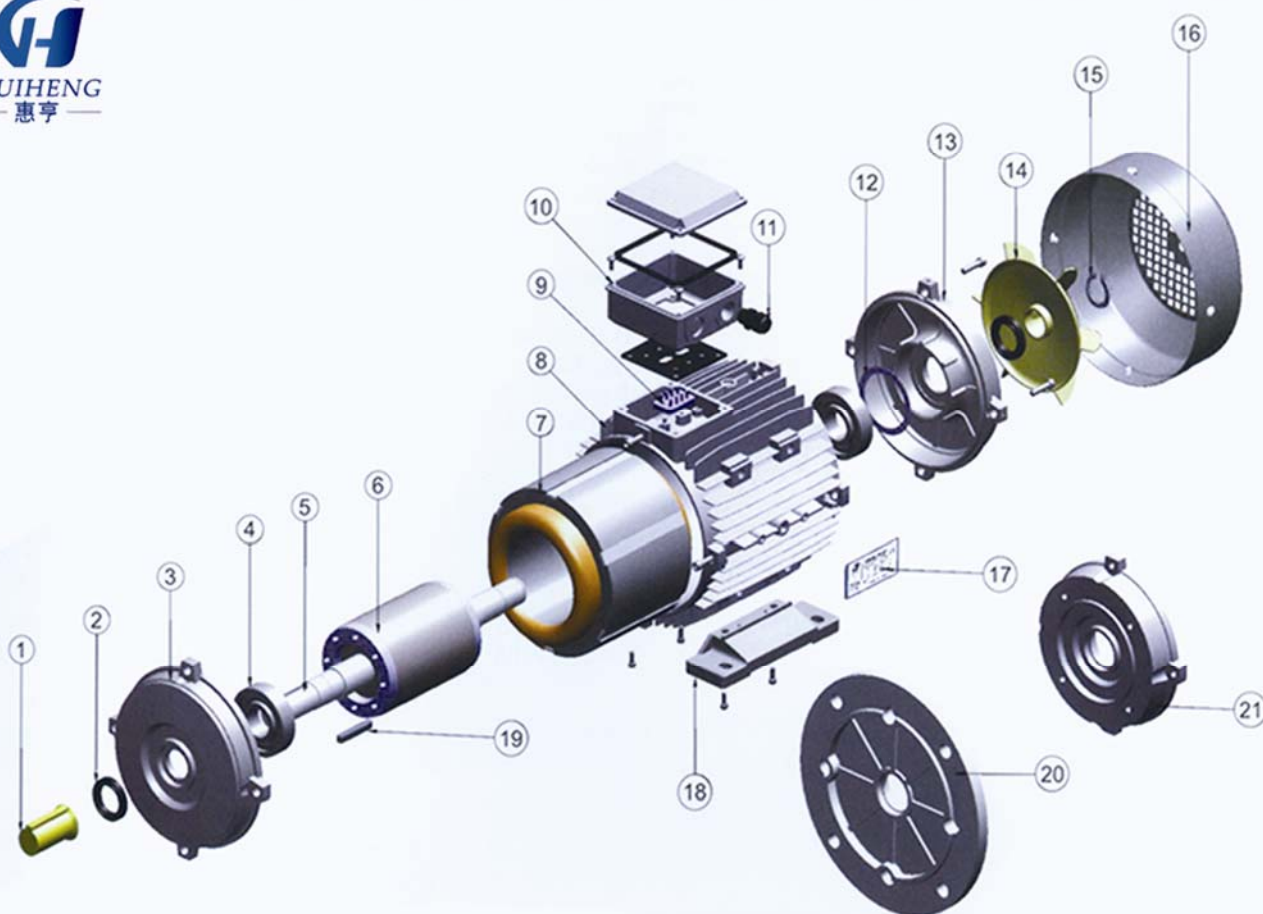
惠亨愿为世界汽保产业提供一流服务。

Shanghai Tian Yi Industrial Co.,Ltd is the leading manufacturer in the electric motor and compact electro-hydraulic powerpacks in China. As of being found, we have made continuous effort which enabled us to provide top-quality electric motors (for car maintenance equipment) and powerpack.

Electric motors are used on auto maintenance equipment (car lift, wheel balancer, tire changer) and hydraulic equipment. All our motors are CE certified. Some of our models meet NEMA standard. Our R&D team is able to design special application motor according to your specific requirements.

Pump section of powerpack adopts original Italian base circuit and gear pumps. With the pumps ranging 0.3-10cc/rev, motors output ranging 0.5-4.0KW (AC) and 0.2-3.0KW (DC),the reservoir ranging 1-25Liter and the various purpose circuit, the application of our powerpacks are getting wider from the general machinery to special purpose truck and small laboratory equipment such as auto post hoist, electric scissor lift, lift gate, stackler, forklift, lift table, dumping truck, dock leveler, wing body and tower crane brake.

Tian Yi wants to render better service to worldwide auto maintenance industry.



www.huihengmotor.com

HUIHENG

- | | |
|--------------------|-----------|
| 1 Shaft protection | 1 轴伸套 |
| 2 Oil seal | 2 油封 |
| 3 Front shield | 3 前端盖 |
| 4 Bearing | 4 轴承 |
| 5 Shaft | 5 转轴 |
| 6 Rotor | 6 转子 |
| 7 Stator | 7 定子 |
| 8 Frame | 8 机壳 |
| 9 Terminal board | 9 接线板 |
| 10 Terminal box | 10 出线盒 |
| 11 Cable gland | 11 螺套 |
| 12 Wave washer | 12 波形垫圈 |
| 13 Rear shield | 13 后端盖 |
| 14 Cooling fan | 14 风叶 |
| 15 Snap ring | 15 卡环 |
| 16 Fan cover | 16 风罩 |
| 17 Nameplate | 17 铭牌 |
| 18 Feet | 18 底脚 |
| 19 Key | 19 键 |
| 20 B5 flange B5 | 20 B5 法兰 |
| 21 B14 flange B14 | 21 B14 法兰 |

举升机电机系列 Car lift motor series



ML\MS series hydraulic power single & three phase induction motors suitable for load requiring High starting torque such as hydraulic power unit system and car liftr series

ML\MS系列单、三相铝壳电机适用于要求起动转矩大的负载，如液压动力单元系统、举升机系列。

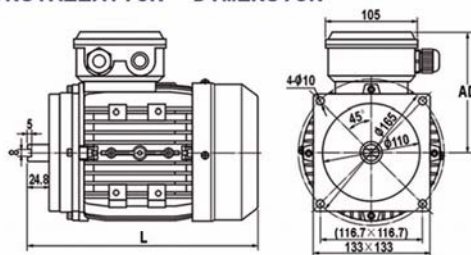
MOTOR FEATURES

- IP54 enclosure
- Duty S1、S3
- Suitable for high starting torque, frequently started machine contact huiheng motors are available on request. Please quotation
- Multiple feet locations
- Aluminium frame, end shields and base
- Utilise Vacuum impregnated Class B insulation
- Class F on request

举升机电机一三相 Car Lift Motor -Three phase



INSTALLATION DIMENSION



TECHNICAL DATA

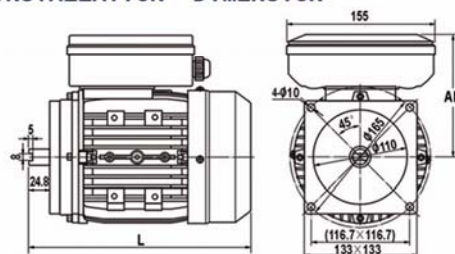
MOTOR MODEL 型号	OUTPUT 功率 (KW)	VOLTAGE 电压 (V)	FREQUENCY 频率 (Hz)	CURRENT 电流 (A)	SPEED 转速 (RPM)	PHASE 相数	LOCK-TOTOR CURRENT 1ST 堵转电流 (A)	AD MM	L MM	DUTY CYCLE 工作制	WEIGHT 净重 (KG)	QTY/20FT
MS90L1-4	2.2	220/380	50	9.7/5.6	1400	3	7.0	144	294	S3	14.5	1120
MS90L2-4	3	220/380	50	10.9/6.3	1400	3	7.0	144	294	S3	16	1120
MSH90L-2	2.2	220/380	50	8.8/5.1	2800	3	7.5	144	294	S3	12.8	882
MSH90L2-2	3	220/380	50	10.5/6.1	2850	3	7	144	294	S3	15	882

www.huihengmotor.com

举升机电机一单相 Car Lift Motor -Single phase



INSTALLATION DIMENSION



TECHNICAL DATA

MOTOR MODEL 型号	OUTPUT 功率 (KW)	VOLTAGE 电压 (V)	FREQUENCY 频率 (Hz)	CURRENT 电流 (A)	SPEED 转速 (RPM)	PHASE 相数	LOCK-TOTOR CURRENT 1ST 堵转电流 (A)	AD MM	L MM	DUTY CYCLE 工作制	WEIGHT 净重 (KG)	QTY/20FT
ML90L2-4	2.2	220	50	16	1400	1	70	152	381	S3	20.1	1120



Application & Feature

Specifically designed for car wheel balancer.
Aluminum frame; high starting torque to facilitate prompt start-up

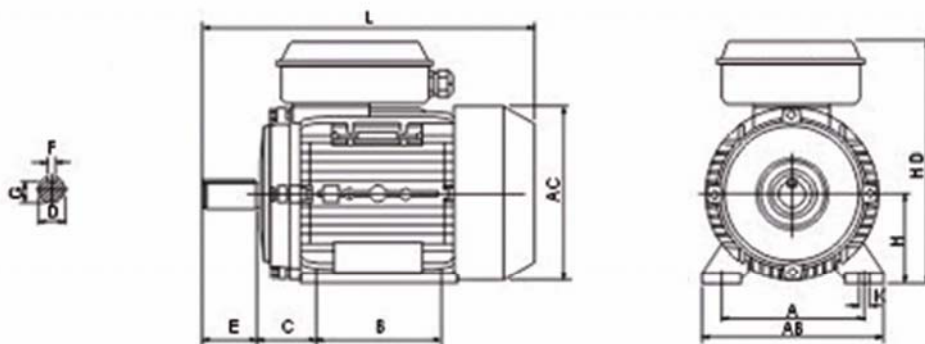
应用及特点

特别为轮胎平衡机配套使用设计。铝壳，大启动力矩确保轮胎平衡机快速启动

www.huihengmotor.com



INSTALLTION DIMENSION



TECHNICAL DATA

MOTOR MODEL 型号	OUTPUT 功率 (KW)	VOLTAGE 电压 (V)	FREQUENCY 频率 (Hz)	CURRENT 电流 (A)	SPEED 转速 (RPM)	PHASE 相数	HD MM	L MM	DUTY CYCLE 工作制	WEIGHT 净重 (KG)	QTY/20FT
MY6324	0.2	220	50	1.7	1260	1	160	216	S2	5	2730
MY6324	0.2	220	60	1.7	1600	1	160	216	S2	5	2730
MY6324	0.2	110	60	2.94	1650	1	160	216	S2	5	2730
MY7126	0.25	220	50	2.5	935	1	178	220	S2	7	2700

轮胎拆胎机电机 Tire Changer Motor



Application & Feature

Specifically designed for car tire changer. Aluminum frame; high starting torque to facilitate prompt start-up; It adopts asynchronously running single-phase capacitor, dispensing with centrifugal switch and starting electrolytic capacitor. It adapts to being started frequently.

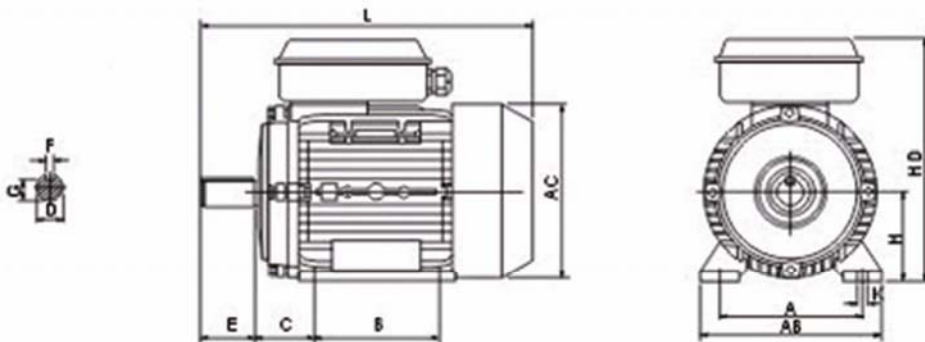
应用及特点

特别为轮胎拆胎机配套使用设计。铝壳，大启动力矩确保拆胎机快速启动；其中单相电机采用异步电容运转设计，免除离心开关和启动电容。适应频繁启动的工况要求。



INSTALLTION DIMENSION

www.huihengmotor.com



TECHNICAL DATA

MOTOR MODEL 型号	OUTPUT 功率 (KW)	VOLTAGE 电压 (V)	FREQUENCY 频率 (Hz)	CURRENT 电流 (A)	SPEED 转速 (RPM)	PHASE 相数	HD MM	L MM	DUTY CYCLE 工作制	WEIGHT 净重 (KG)	QTY/20FT
MS8014	0.55	220/380	50	3.1/1.8	1400	3	137	264	S2	7.7	1530
MS8024	0.75	220/380	50	3.8/2.2	1400	3	137	264	S2	9.2	1530
MSD80C-2/4	1.1/0.75	380	50	2.4/1.9	2800/1400	3	137	264	S2	11	1530
MY8024	0.75	220	50	5.2	1400	1	229	278	S2	10.4	1530
MY8034	1.1	220	50	6.8	1400	1	229	278	S2	12	1530

APPLICATION & FEATURE

- Rated outputs and frame sizes in accordance with NEMA standards
- Duty type S1 (continuous duty) with sufficient thermal margin to withstand short overload
- Degree of Protection: IP 43
- Insulation class F
- Maximum ambient 40°C
- Altitude ≤ 1000m a. s. l
- Service factor 1.15
- Manual or Automatic overload protection required
- Pumps, fans and blowers, farm equipment, conveyors, machine tools, gear reducers and other applications

产品特点

电机机座及功率符合NEMA标准

电机工作制为S1，可以满足短时过载

防护等级IP43

F级绝缘

最高环境温度40°C

使用的海拔高度不超过1000m

服务系数1.15

可按需要加装手动或自动过载保护装置

产品应用

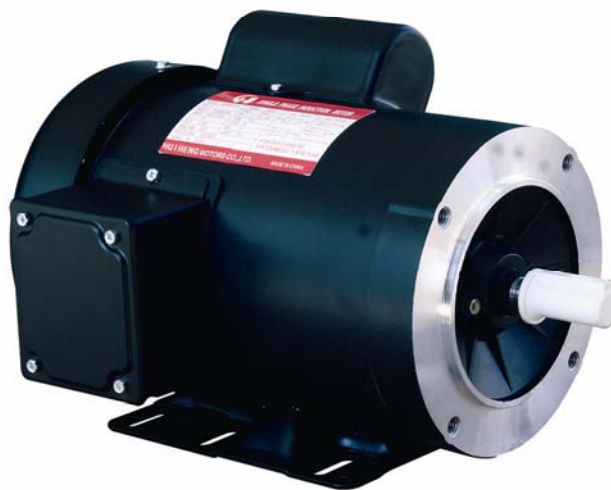
水泵，风扇，风机，农用设备，传送带，

机械工具，齿轮减速机

www.huihengmotor.com



NL SERIES



NC SERIES



NS SERIES

NL/NC SERIES SINGLE PHASE INDUCTION MOTORS, TEFC, ROLLED STEEL MOTOR BODY.

系列高效单相钢板壳电动机

Technical Date (60Hz).

MODEL TYPE 型号		POWER 功率		CURRENT AT VOLTS 电流 IN (A)		FULL SPEED 转速	EFF@ FULL LOAD 效率	FULL-LOAD POWER FACTOR 功率因数	RATED TORQUE TN 额定转矩	IST (A) 230V 堵转电流	TST/TN 堵转转矩	BREAK DOWN TORQUE TMAX/TN (NM) 115V 最大堵转	SOUND POWER @NO-LOAD 空载噪声 DB (A)	APPROX WEIGHT 净重 (KG)
SERIES	TYPE	(HP)	(W)	115V	208-230V	(RPM)	(%)	COS Φ	(N m)					
NL	562-2	1-1/2	1100	13.2	7.3-6.6	3450	77.0	0.94	3.05	50	6.12	4.90	75	13.9
NL	56H1-2	2	1500	17.5	9.7-8.7	3450	79.5	0.94	4.15	65	7.46	6.26	78	16.6
NL	56H1-4	1-1/2	1100	14.8	8.2-7.4	1725	77.0	0.84	6.09	50	16.95	9.22	73	16.4
NL	56H2-4	2	1500	20.1	11.1-10.1	1725	79.5	0.82	8.31	65	21.70	13.70	73	19.9
NC	563-2	1	750	11.7	6.5-5.9	3450	69.5	0.80	2.08	45	5.17	3.73	75	13.6
NC	563-4	3/4	550	10.1	5.6-5.1	1725	67.0	0.71	3.05	35	10.10	4.92	70	12.9
NC	56H1-4	1	750	13.5	7.5-6.8	1725	70.0	0.69	4.15	45	12.21	7.00	70	16.0

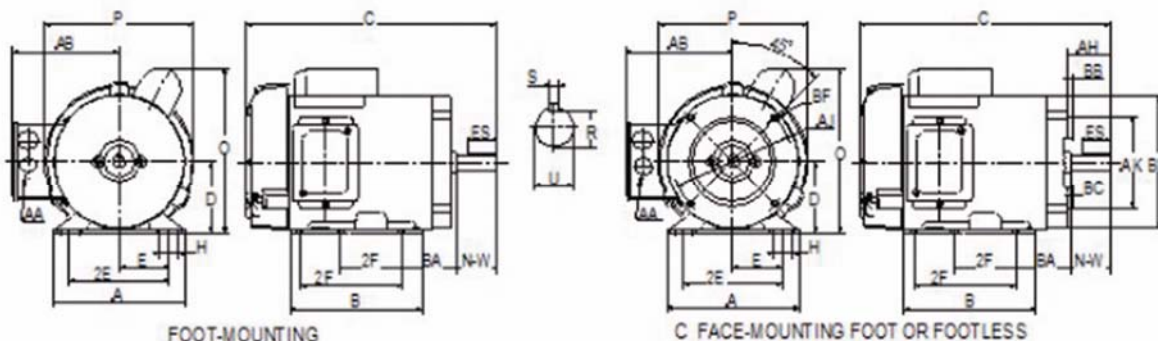
NS SERIES THREE PHASE INDUCTION MOTORS, HIGH EFFICIENCY, ROLLED STEEL MOTOR BODY.

系列高效三相钢板壳电动机

Technical Date (60Hz).

www.huihengmotor.com

MODEL TYPE 型号		POWER 功率		CURRENT AT VOLTS 电流 IN (A)		FULL SPEED 转速	EFF@ FULL LOAD 效率	FULL-LOAD POWER FACTOR 功率因数	RATED TORQUE TN 额定转矩	IST (A) 230V 堵转电流	TST/TN 堵转转矩	BREAK DOWN TORQUE TMAX/TN (NM) 115V 最大堵转	SOUND POWER @NO-LOAD 空载噪声 DB (A)	APPROX WEIGHT 净重 (KG)
SERIES	TYPE	(HP)	(W)	460V	208-230V	(RPM)	(%)	COS Φ	(N m)					
NS	565-2	1-1/2	1100	2.1	4.6-4.2	3450	78.5	0.84	3.05	40	1.75	6.82	85	11.3
NS	56H1-2	2	1500	2.8	6.2-5.6	3450	79.5	0.85	4.15	50	1.70	8.73	85	13.4
NS	56H1-4	1	750	1.8	3.9-3.5	1725	73.5	0.73	4.15	30	2.75	9.79	70	11.3
NS	56H2-4	1-1/2	1100	2.4	5.3-4.8	1725	78.0	0.74	6.09	40	2.50	12.90	70	13.3
NS	56H3-4	2	1500	3.0	6.6-6.0	1725	81.5	0.77	8.31	50	2.35	19.10	74	15.8

INSTALLATION DIMENSIONS


NAMA FRAME	A	B	C	D	E	2F	H SLOT	O	P	U	Keyseat			N-W	AA	AH	AJ	AK	BA	BB	BD	BF	
											R	S	ES min										
56	6.54	4.33	12.9			3.00																	
56H	6.54	6.54	14.4	3.50	2.44	3.00	0.34*0.88	9.37	36.0	6250	0.51	70.188	1.41	1.88	1-0.88 2-1.09	2.06	5.875	4.52	75.0	16	6.5	4*	3/8-16



APPLICATION & FEATURE:

Specifically designed for car tire changer.

- Utilise IP55 enclosures, IP54 on request
- Multiple feet locations
- Aluminium frame, end shields and base
- High strength cable gland
- Shaft key and protector supplied
- Superior paint finish
- Motors made to heavy duty service factors
- Can be made for continuous S1 duty
- Utilise Vacuum impregnated
- Class F insulation

应用及特点

特别为高压清洗机配套使用设计。

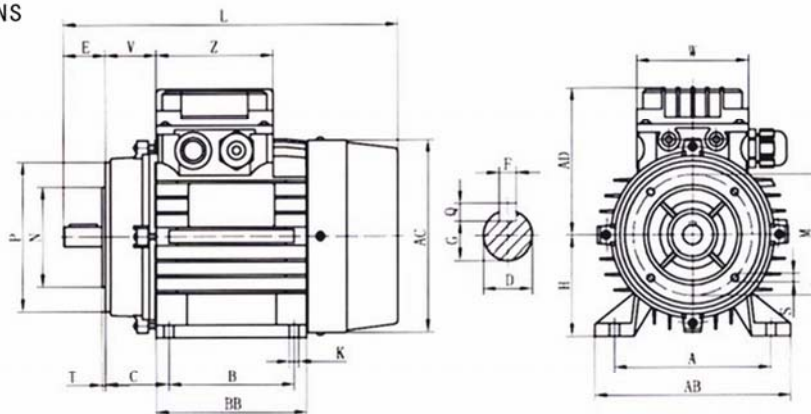
采用 IP55 (可按需要采用 IP54)

- 活动脚底
- 铝壳机座, 端盖, 底脚
- 高强度密封圈
- 可供轴键和保护器
- 油漆罩面光洁
- 适于高负载工作
- 可供不锈钢轴
- S1连续工作制
- 真空浸漆
- F级绝缘



www.huihengmotor.com

INSTALLATION DIMENSIONS



TECHNICAL DATA

MOTOR MODEL 型号	OUTPUT 功率 (KW)	VOLTAGE 电压 (V)	FREQUENCY 频率 (Hz)	CURRENT 电流 (A)	SPEED 转速 (RPM)	PHASE 相数	HD MM	L MM	DUTY CYCLE 工作制	WEIGHT 净重 (KG)	INSTALLATION TYPE 安装类型
MS100L2-4	3	220/380	50	11.3/6.5	1430	3	253	384	S1	26	B34
MS100L3-4	4	220/380	50	15.2/2.8	1430	3	253	384	S1	29	B34
MS112M2-4	5.5	220/380	50	20.4/11.8	1435	3	286	390	S1	35	B34
MS132M-4	7.5	220/380	50	26.9/15.6	1450	3	324	477	S1	54	B34
MS132M2-4	9.2	220/380	50	32.8/19	1460	3	324	477	S1	60	B34
MY90L-4	2.2	220	50	13.6	1400	1	365	360	S1	16	B34
ML100L1-4	2.4	220	50	14	1400	1	280	380	S1	26	B34
ML100L2-4	3	220	50	18	1400	1	280	380	S1	31	B34

液压原理图 Hydraulic diagram



交流液压动力单元技术参数 AC Power Unit technical Parameter

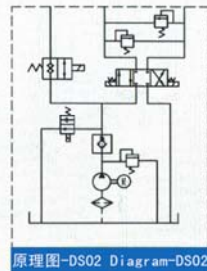
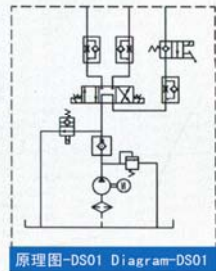
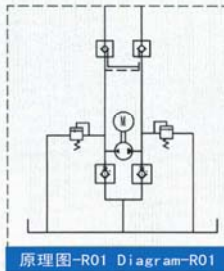
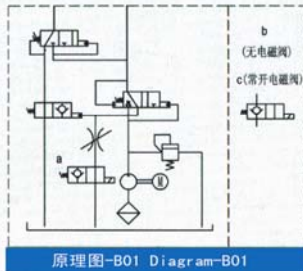
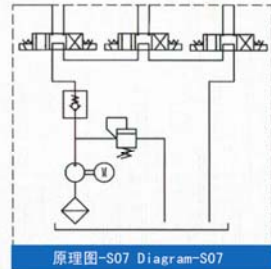
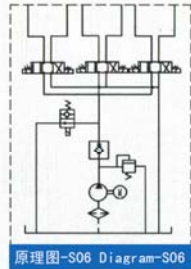
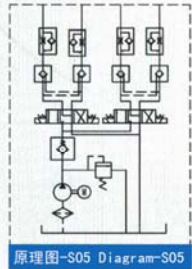
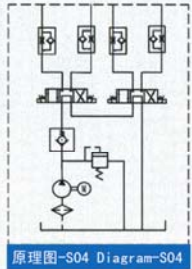
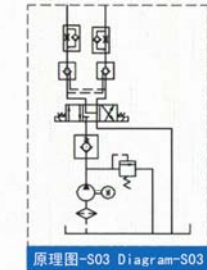
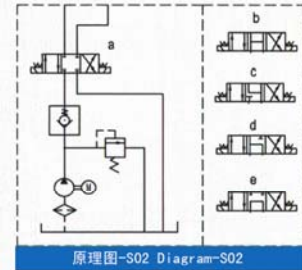
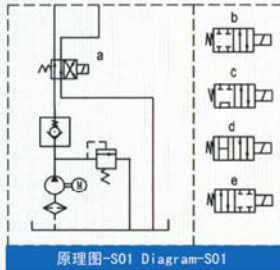
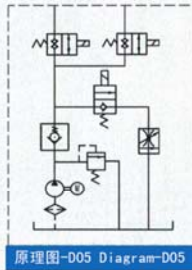
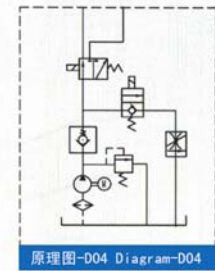
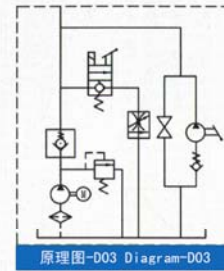
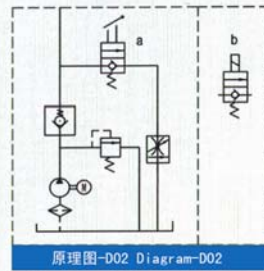
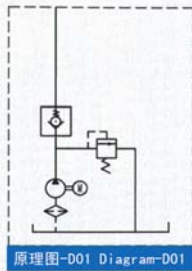
电压Voltage: 单相Single Phase 220V 三相Three Phases 380V
 功率Power: 0.75KW 1.5KW 2.2KW 3KW 4KW
 工作制S2: 10min
 转速Rotation: 2800rpm 1400rpm
 齿转泵排量Displacement of pump: 0.6ml/r 1.0ml/r 1.6ml/r
 2.0ml/r 3.3ml/r 4.2ml/r 6.0ml/r 9.8ml/r
 油箱容积Capacity of tank: 1.7L 2.8L 3.9L 5.0L 6.0L 7.0L
 8.0L 9.0L 10.0L 12.0L 14.0L 25L 30L
 工作压力Operation Pressure: 0-300Bar

直流液压动力单元技术参数 DC Power Unit technical Parameter

电压Voltage-功率Power: 12V-0.85kw 24V-1.2kw 12V-1.6kw
 24V-2.2kw 24V-3.0kw 24V-4.0kw
 工作制S2: 2min
 工作压力Operation Pressure: 0-300Bar
 齿转泵排量Displacement of pump: 0.6ml/r 1.0ml/r 1.6ml/r
 2.0ml/r 2.5ml/r 3.3ml/r 4.2ml/r
 油箱容积Capacity of tank: 1.7L 2.8L 3.9L 5.0L 6.0L 7.0L
 8.0L 9.0L 10.0L 12.0L 14.0L 25L 30L



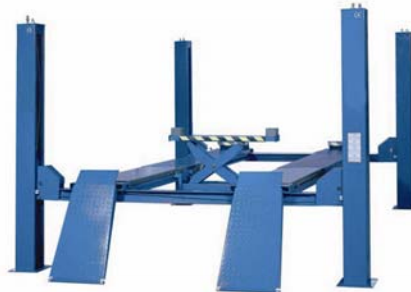
www.huihengmotor.com



We have been supplying worldwide PPC AC/DC hydraulic powerpack and gained acceptance from global users for its modular design ideology and flexibility. PPC series comes in power from 0.15kw to 4.0kw, flow rate from 0.3 to 14 L/min with pressure up to 300 Bar.

PPC系列:交流和直流液压动力单元,十年来我们在全球范围内为客户提供可靠的动力单元,得到了客户的认可。产品的模块化的设计理念和灵活性以及他们的性能都被广大的客户认可,并大加赞赏。功率从0.15到4.0千瓦,流量从0.3到14升/分钟,产生压力可达300 Bar以上。

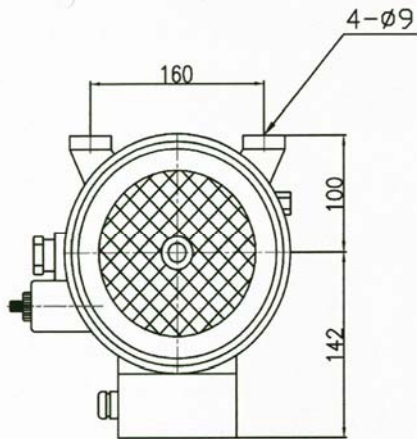
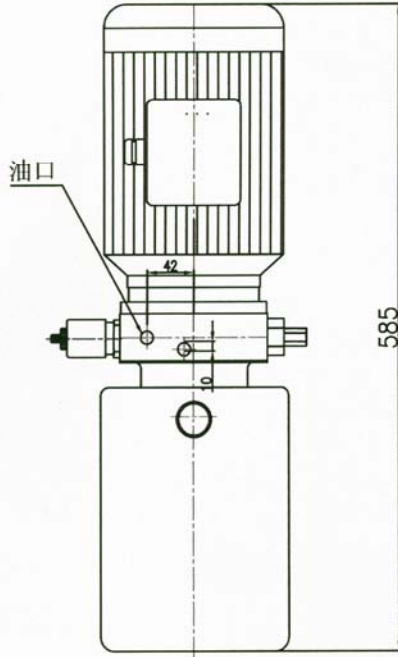
应用于 举升机 Application: 2 pole/4pole car lift



www.huihengmotor.com

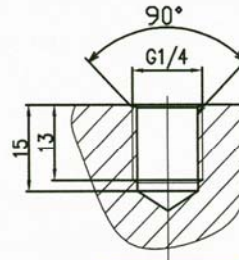
应用于升降机——液压动力单元外形及原理图

Outline and schematic diagram of powerpack applied on car lift



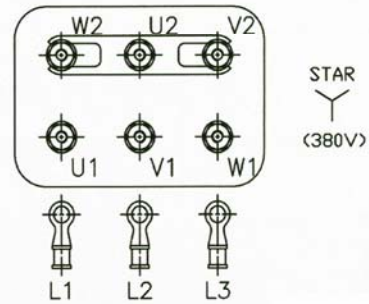
出油/回油口尺寸

Oil outlet/inlet size



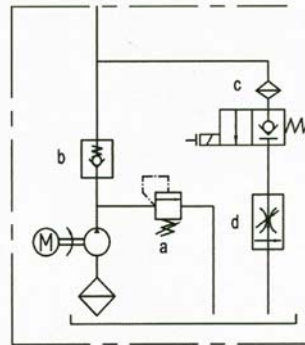
电机接线图

Wiring diagram



液压原理图

Hydraulic diagram



www.huihengmotor.com

序号 NO	电机参数 MOTOR	泵排量 PUMP	油箱 OIL TANK	阀件 VALVE	订货编码 ORDER CODE
001	3φ380V	4.3ml/r	规格Spec:φ170mm*285mm	a安全压力阀: 压力出厂设定为200bar Safe pressure valve (firstly set as 200bar)	HH-2012012
	2.2KW			b单向阀: RS3/817 One-way valve (RS3/817)	
	50Hz		容量Volume:8L (立式安装) Vertical fitting	c电磁阀 (控制电压DC24V) Solenoid (control voltage:24v)	
	4Pole			d压力补偿节流阀 Pressure-compensated throttle	

Hydronit

Modular design allows different configuration for this series AC / DC powerpack. Compact structure gives wider field of application, especially when it comes to restricted space or limited scope like automobile, logistics (small transport vehicle and forklift), medical instrument operating table and mobile application like small dumper and SUV. This series comes in power from 0.15kw to 4.0kw, flow rate from 0.2 to 14 L/min with pressure up to 250Bar.

该系列模块化设计可以实现若干种不同的配置：直流或交流动力单元。动力单元的构造极为紧凑，这些产品可以应用于更广泛的范围，尤其是应用于空间或规模有比较严格的限制，比如汽车领域的应用，物流领域（小型运输车 and 叉车）的应用、医疗器械和手术床以及移动的应用（小翻斗车、休闲车辆等）。功率从0.15到4.0千瓦，流量从0.2到14升/分钟，产生压力可达250Bar。



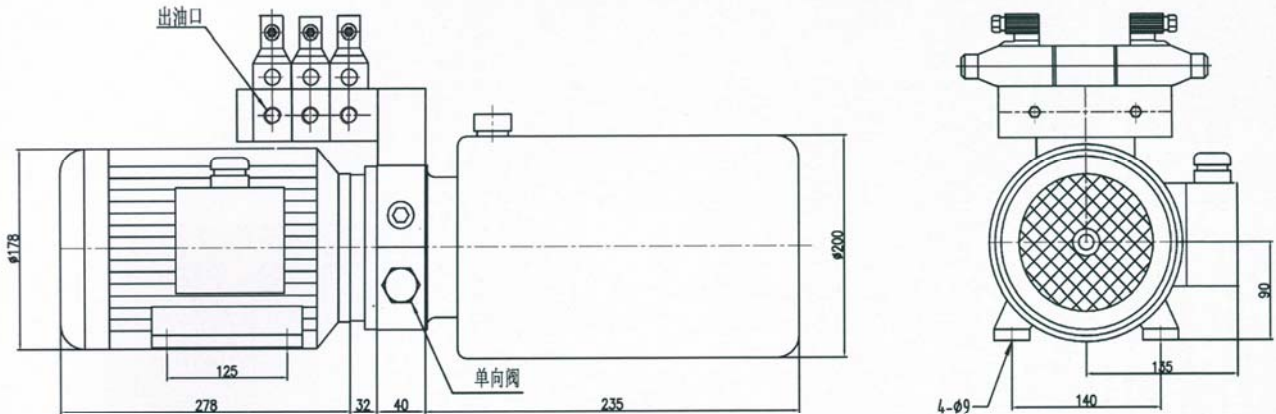
应用于 扒胎机 Application type lifter



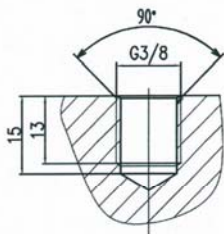
www.huihengmotor.com

应用于扒胎机——液压动力单元外形及原理图

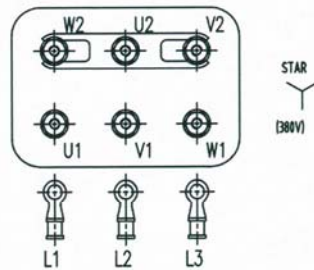
Outline and schematic diagram of powerpack applied on tire changer



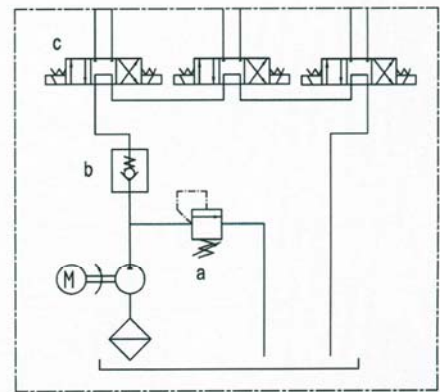
出油/回油口尺寸
Oil inlet/outlet size



电机接线图
Wiring diagram



液压原理图
Hydraulic diagram



www.huihengmotor.com

序号 NO	电机参数 MOTOR	泵排量 PUMP	油箱 OIL TANK	阀件 VALVE	订货编码 ORDER CODE
001	3φ380V	3.5ml/r	规格Spec: φ200mm*235mm 容量Volume: 6L (立式安装) Horizontal fitting	a安全压力阀: 压力出厂设定为160bar Safe pressure valve (firstly set as 160bar)	HH-2012011
	1.5KW			b单向阀 One way valve	
	50Hz			c三位四通换向阀 (控制电压DC24V) 3-Position 4-way valve (control voltage 24V)	
	4Pole				



上海惠亨机电设备有限公司
SHANGHAI HUIHENG ELECTRICAL EQUIPMENT CO.,LTD

地址：上海市漕河泾开发区虹梅路2007号远中产业园5#408

Add: Room 408, Building 5, No.2007 Hongmei Road,
Caohejing Hi-Tech Park, Shanghai

电话 (Tel) : 86-21-64692253 86-21-64692256

传真 (Fax) : 86-21-51062256

邮编 (P.C) : 201103

网址 : <http://www.huihengmotor.com>

电子邮箱 (E-mail) : info@huihengmotor.com